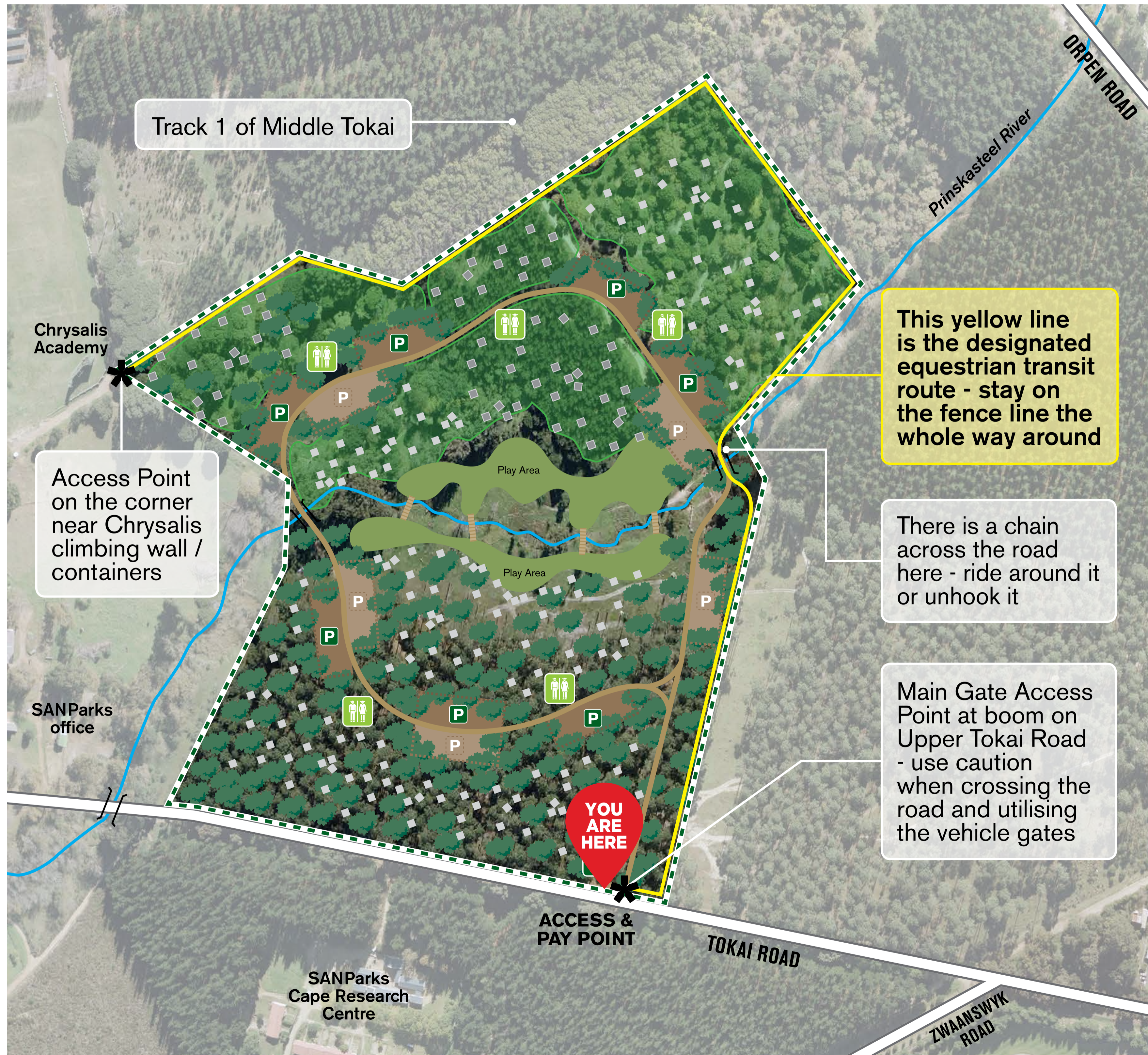


Tokai Picnic Site Equestrian Transit Route

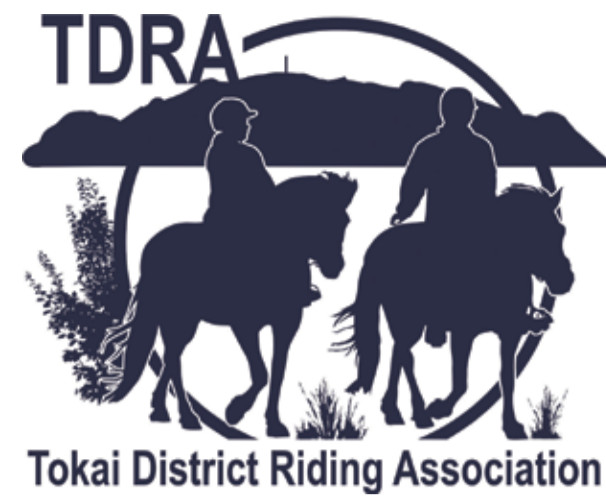


Terms and conditions of access:

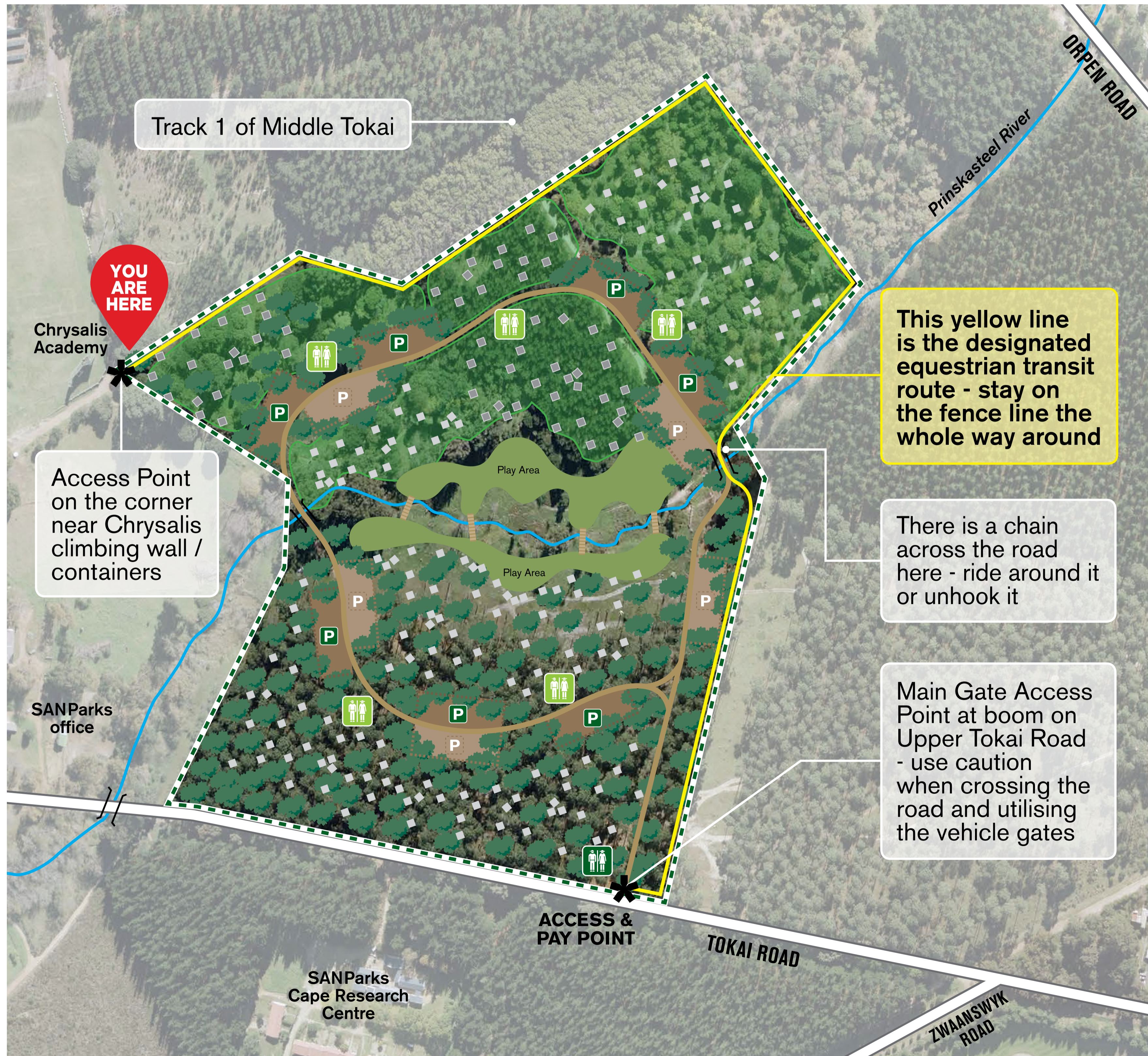
- **Designated access times:**
October to April : 07h00 – 18h00
May to September: 08h00 – 17h00
Warning: the picnic site is used as a parking area for cyclists on weekends resulting in this being a high traffic area - exercise caution.
- You may enter/exit at the gate near the Chrysalis sports field and enter/exit at the gate on Upper Tokai Road (the gate staff will let you in/out through the vehicle gate).
- Be careful of vehicles when near the main gate and crossing Upper Tokai Road – cross on Manor House side of the boom.
- If your horse manures on Upper Tokai Road or at the main gate, please dismount and clear it up. There is a sack and scoop behind the boom-gate hut.
- Horse riders may never ride through the actual picnic areas. Stick to the yellow route indicated on the map.
- Horse riders must practice extreme caution when the picnic site is in use by other users – ideally, horse riders should avoid peak picnicking days completely for safety.

Table Mountain National Park

A Park for All, Forever 'n Park vir Almal, vir Altyd iPaka yoluntu lonke ngonaphakade



Tokai Picnic Site Equestrian Transit Route



Terms and conditions of access:

• Designated access times:

October to April : 07h00 – 18h00

May to September: 08h00 – 17h00

Warning: the picnic site is used as a parking area for cyclists on weekends resulting in this being a high traffic area - exercise caution.

- You may enter/exit at the gate near the Chrysalis sports field and enter/exit at the gate on Upper Tokai Road (the gate staff will let you in/out through the vehicle gate).
- Be careful of vehicles when near the main gate and crossing Upper Tokai Road – cross on Manor House side of the boom.
- If your horse manures on Upper Tokai Road or at the main gate, please dismount and clear it up. There is a sack and scoop behind the boom-gate hut.
- Horse riders may never ride through the actual picnic areas. Stick to the yellow route indicated on the map.
- Horse riders must practice extreme caution when the picnic site is in use by other users – ideally, horse riders should avoid peak picnicking days completely for safety.

Table Mountain National Park

A Park for All, Forever 'n Park vir Almal, vir Altyd iPaka yoluntu lonke ngonaphakade